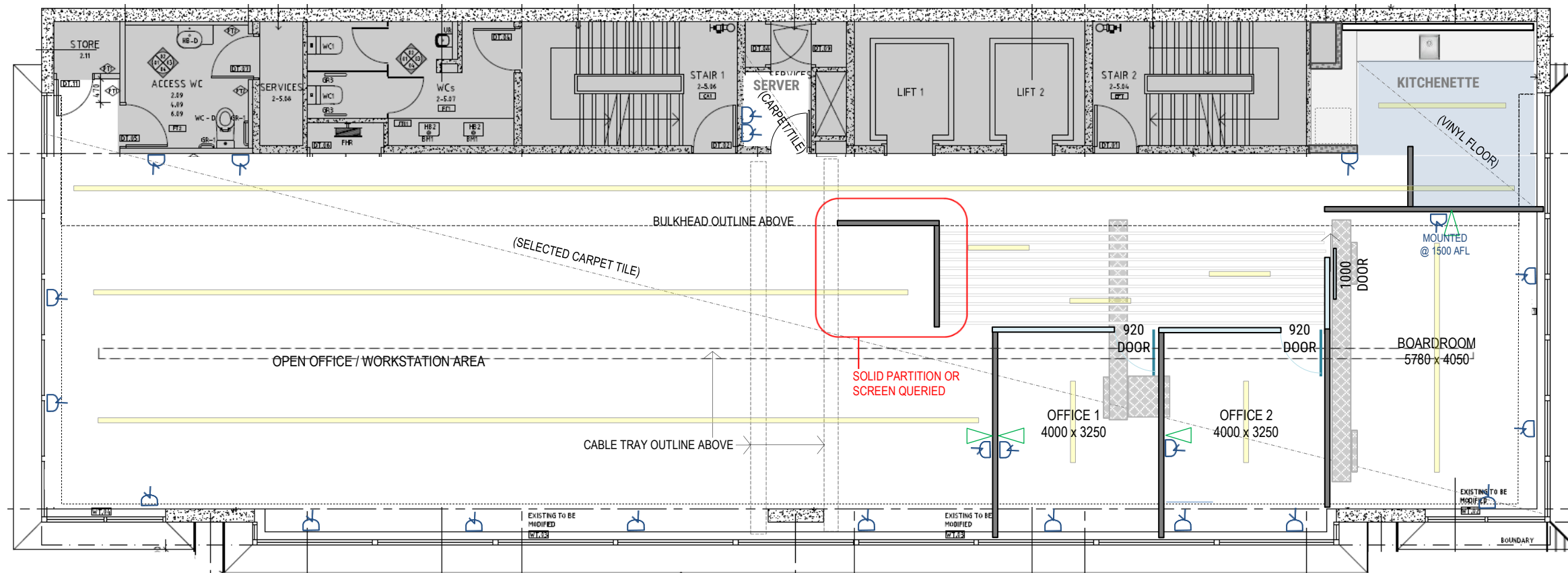










FLOOR PLAN NOTE: ALL DIMENSIONS NOMINAL – TO BE CHECKED ON SITE

REVISED 03/04/2020

- DIMENSIONS UPDATED ON SETOUT PLAN



FITOUT LAYOUT LEGEND

-  GLASS PARTITION (BLACK FRAME + CLEAR GLASS)
-  FULL HEIGHT PLASTERBOARD PARTITION WITH INSULATION
-  FRAMED GLASS DOOR (MATCHING GLASS PARTITIONS)
-  BASE BUILD DOUBLE GENERAL POWER OUTLET (ALL ABOVE SKIRTING UNLESS NOTED)
-  COMMS DRAW-CABLE BUILT INTO PARTITION (ALL ABOVE SKIRTING UNLESS NOTED)
-  AIR-CONDITIONING DUCTWORK ABOVE
-  STRIP LED LIGHTING ABOVE
-  FEATURE TIMBER BATTENS

FINISHES SCHEDULE

- CARPET: ECO FLOORS STRADA COMMERCIAL TILE – LAID LINEAL NORTH-SOUTH – TO MATCH GODFREY HURST LONG GRAIN “792 EBONY”
- TIMBER BATTENS: POLYTEC NATURAL OAK MATT 120x32mm
- ALUMINIUM FRAMING: SELECTED COMMERCIAL SUITE POWDERCOATED BLACK
- GLAZING: CLEAR GLASS TO CODE (FROSTING/FILM TO BE UNDERTAKEN BY LESSEE AS REQUIRED)